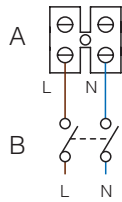


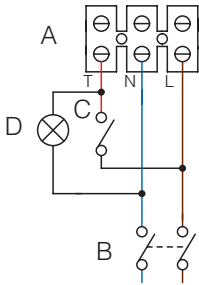
**Punto • Punto PIR • Punto Pull cord •
 Punto HCS • Punto MHC (no timer
 function) • Ariett (no timer function) •
 Ariett I • Ariett MHC (no timer
 function) • M 100/4" • Vort Max S •
 Vort Standard MHC • Axial K •
 Angol KR**



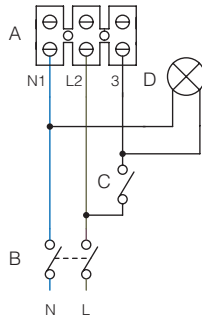
A) Fan Terminal Block
 B) Fan Switch

Punto Timer, T HCS

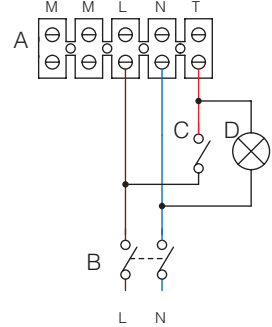
A) Fan Terminal Block
 B) Isolation switch
 - double pole
 C) Light switch
 D) Lamp



Punto Filo T

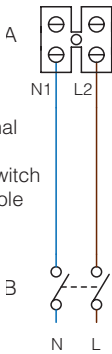


Punto Ghost T



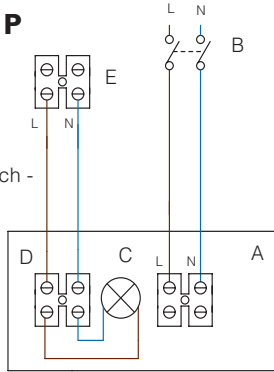
Punto Filo

A) Fan Terminal Block
 B) Isolation switch
 - double pole



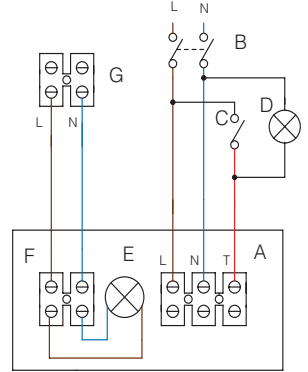
**Punto 12V •
 Punto 12V P**

A) Fan Terminal Block GA
 B) Isolation switch -
 double pole
 C) Lamp
 D) Fan Switch
 out 12 V
 E) Fan Switch
 Punto 12 V



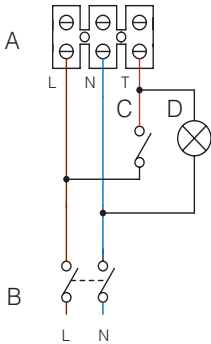
Punto 12VT

A) Fan Terminal Block GA
 B) Isolation switch -
 double pole
 C) Pilot lamp
 D) Lamp
 E) Pilot lamp
 F) Fan Switch
 out 12 V
 G) Fan Switch
 Punto 12 V



**Ariett Timer •
 Ariett I Timer •
 Ariett MHC
 (with timer
 version)**

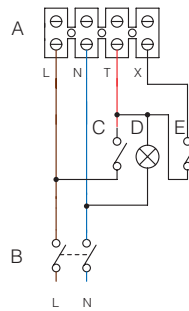
A) Fan Switch
 B) Isolation switch -
 double pole
 C) Light switch
 D) Lamp



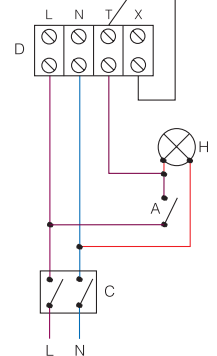
Vort Press 110/220 T and 110/140/240 IT

CONNECTION ROOM WITH
 LIGHT – 2 SPEEDS

A) Fan Switch
 B) Speed selector
 switch
 C) Isolation switch
 - double pole
 D) Fan Terminal
 Block
 E) Lamp

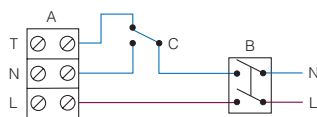


CONNECTION ROOM WITH LIGHT
 MAX SPEED AND MIN SPEED WITH
 TIMER



**Vort Press 110/220
 and 110/140/240 I**

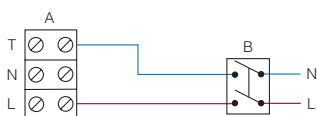
SIMPLE WIRING – 2 SPEEDS



SIMPLE WIRING – MAX SPEED



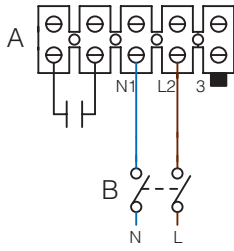
SIMPLE WIRING – MIN SPEED



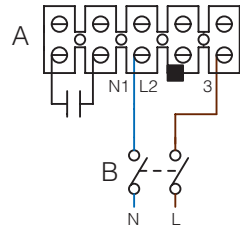
A) Fan Terminal Block
 B) Isolation switch - double pole
 C) Speed selector switch

Vort Quadro

Maximum speed connection

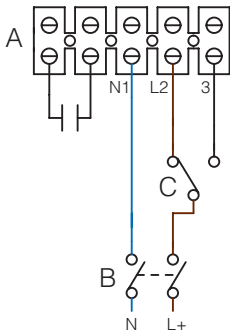


Minimum speed connection



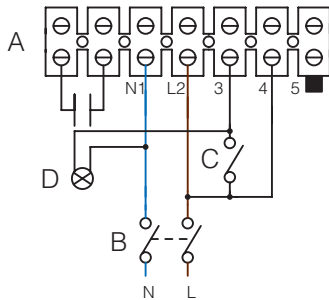
- A) Terminal block
- B) Double pole switch
- C) Min/max selector

Min/max speed connection



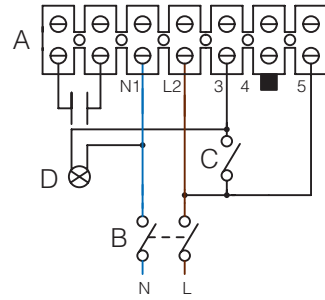
Vort Quadro T - HCS

Connection with timed maximum speed

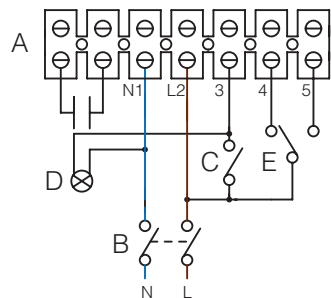


- A) Terminal block
- B) Double pole switch
- C) Switch lamp
- D) Lamp
- E) Min/max selector

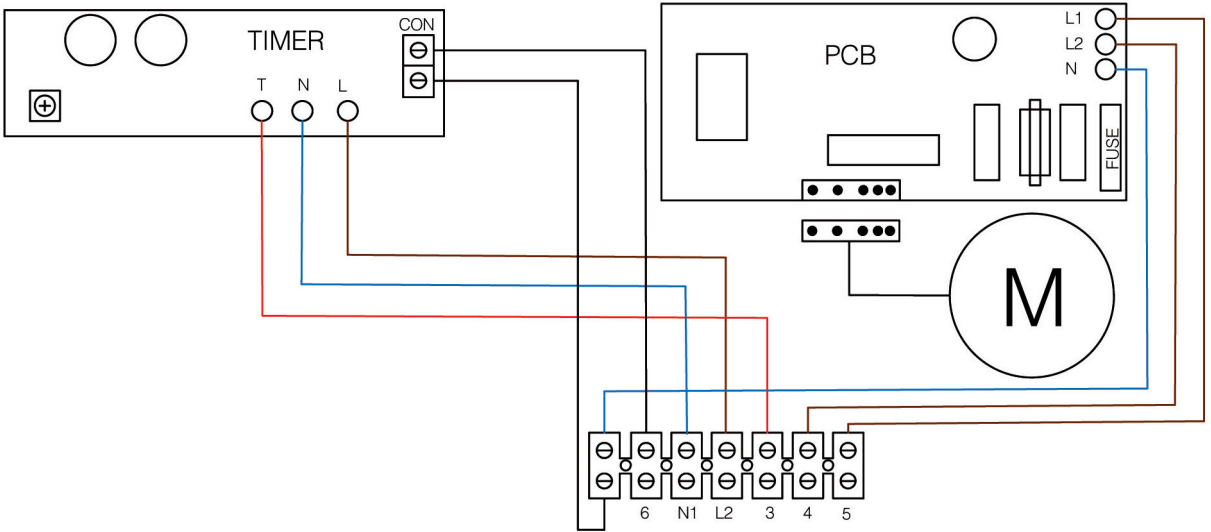
Connection with timed minimum speed



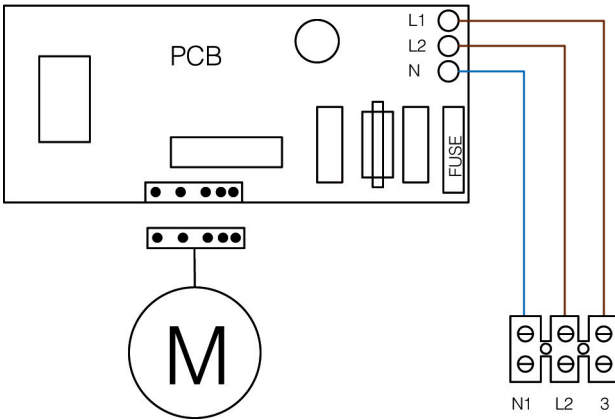
Connection with optional timing of minimum or maximum speed



Vort Quadro Micro 100 Timer ES / 100 I Timer ES

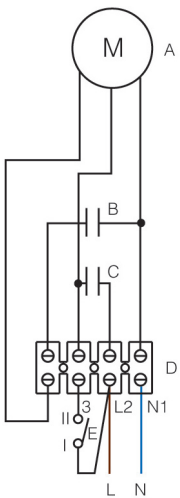


Vort Quadro Micro 100 ES / 100 I ES



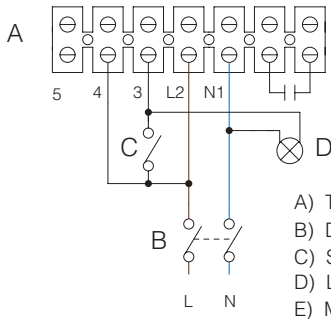
Vort Penta

- A) Motor
- B) Capacitor-minimum speed
- C) Start capacitor
- D) Terminal block
- E) Min/max speed selector

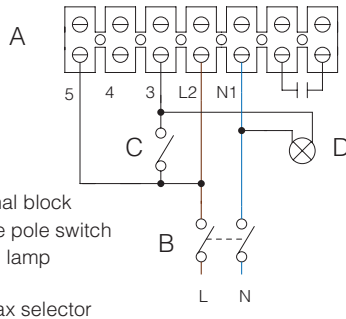


Lineo T

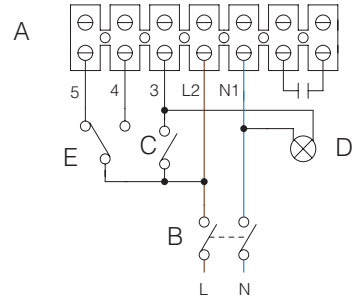
Connection with timed maximum speed



Connection with timed minimum speed

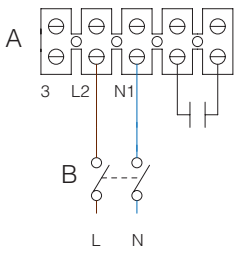


Connection with optional timing of minimum or maximum speed

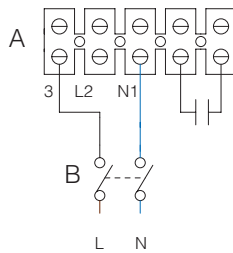


Lineo

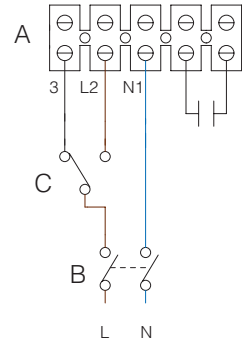
Maximum speed connection



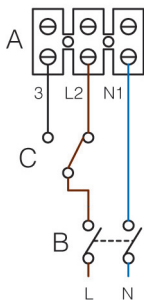
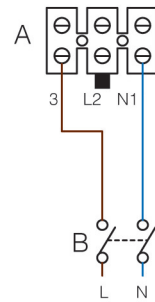
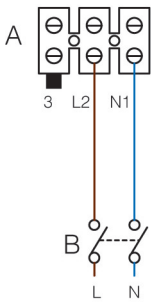
Minimum speed connection



Min/max speed connection



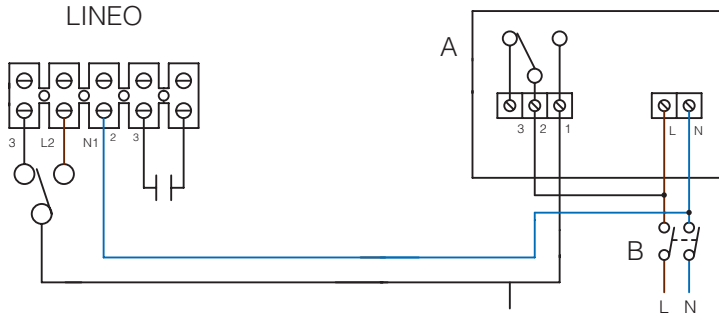
Lineo 100 V0 ES



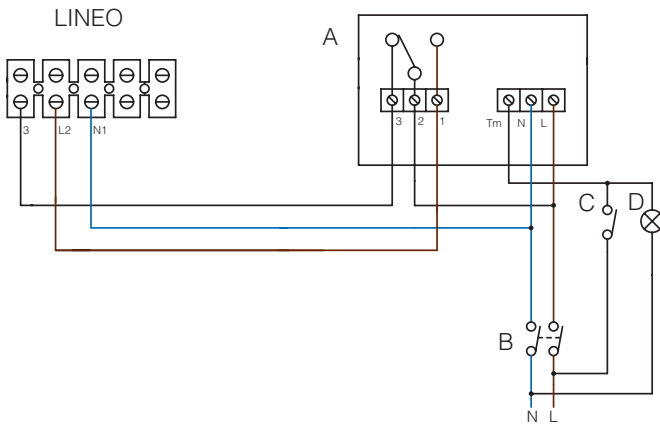
- A) Terminal block
- B) Double pole switch
- C) Min/max selector

Lineo Sensors

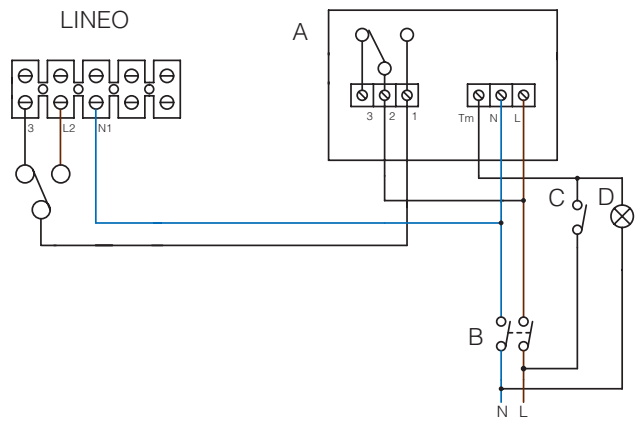
C PIR-TEMP-SMOKE



C T - C HCS

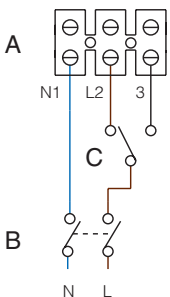


C T - C HCS

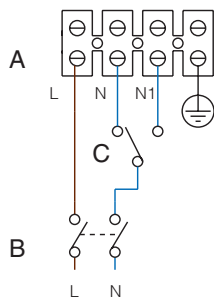


- A) C T - C HCS
- B) Isolation switch - double pole
- C) Switch lamp
- D) Lamp
- A) Fan Terminal Block Vario

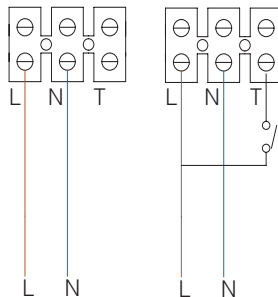
Angol K



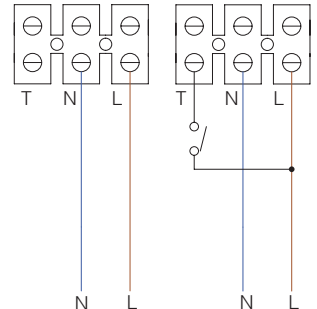
Vort Kappa



Vort Press 220 HCS



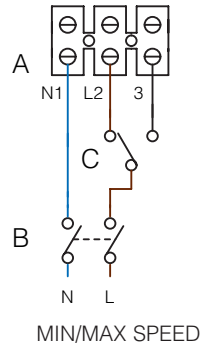
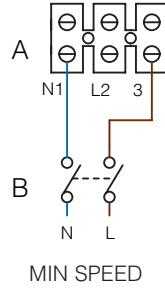
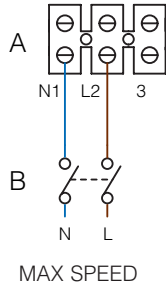
Punto M 150/6" AP HCS D LL



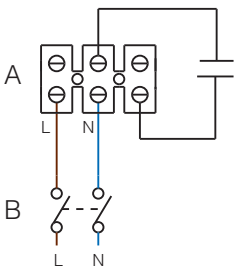
- A) Fan Terminal Block
- B) Isolation switch - double pole
- C) Speed selector switch
- N) Max speed
- N₁) Min speed

Vort Press • Vort Press I

- A) Fan Terminal Block
- B) Isolation switch - double pole
- C) Speed selector switch

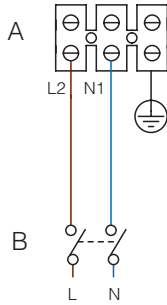


CA V0

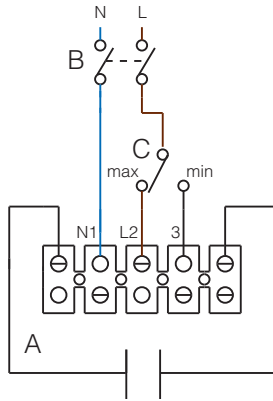


- A) Fan Terminal Block
- B) Isolation switch - double pole

Serie CA

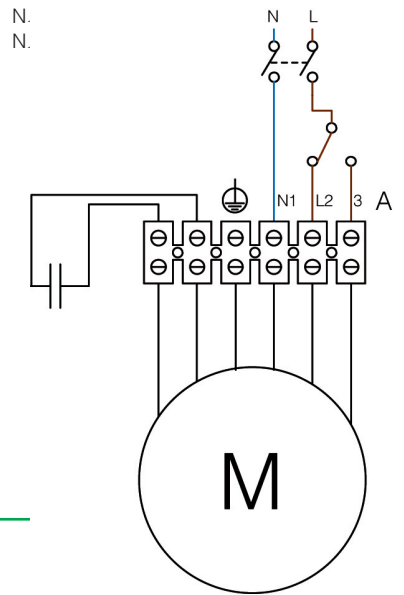


CA V0 D

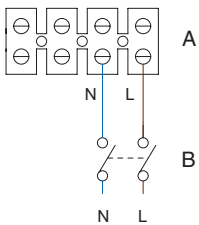


- A) Fan Terminal Block
- B) Isolation switch - double pole
- C) 2-way switch

CA WE D

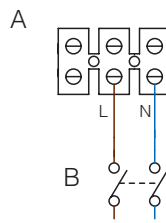


**Premium Dry A • Premium Dry •
Optimal Dry A • Optimal Dry •
Optimail Dry Metal • Optimal Dry RA •
Metal Dry • Metal Dry Automatic •
Metal Dry Ultra A • Metal Dry Super A •
Vortdry • Vortdry Plus • Easy Dry •
Easy Dry Red**



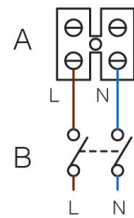
- A) Fan Terminal Block
- B) Isolation switch - double pole

Soft Dry • Soft Dry Plus

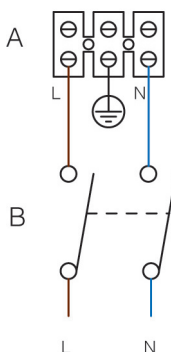


- A) Fan Terminal Block
- B) Isolation switch - double pole

Premium S Dispenser

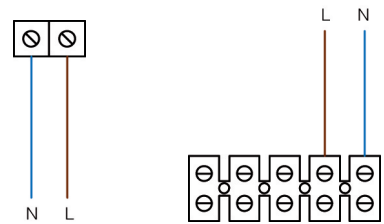


**Vortice hoods • Microrapid V0 •
Thermologica • Microsol V0 •
Tiracamino • CA Wall •
CA Roof**



- A) Fan Terminal Block
- B) Isolation switch - double pole

New Vortice hoods • Vortex hoods



WIRING DIAGRAMS

Vario Range

150/6" P - 230/9" P
 150/6" P LL S
 230/9" P LL S

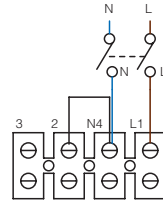
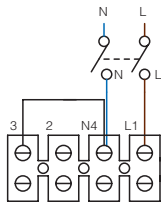
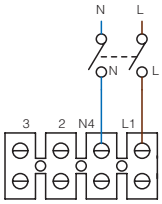
150/6" AR - 230/9" AR - 300/12" AR - 150/6" AR LL S
 230/9" AR LL S - 300/12" AR LL S - 150/6" ARI - 230/9" ARI
 300/12" ARI - 150/6" ARI LL S - 230/9" ARI LL S - 300/12" ARI LL S

150/6" P - 230/9" P
 150/6" P LL S
 230/9" P LL S

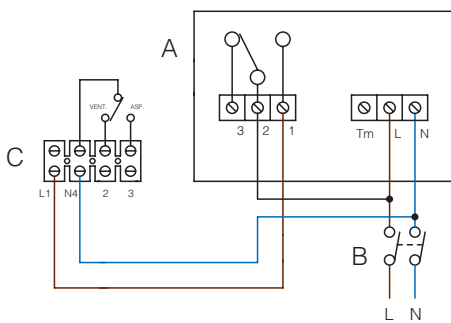
EXHAUST

INTAKE

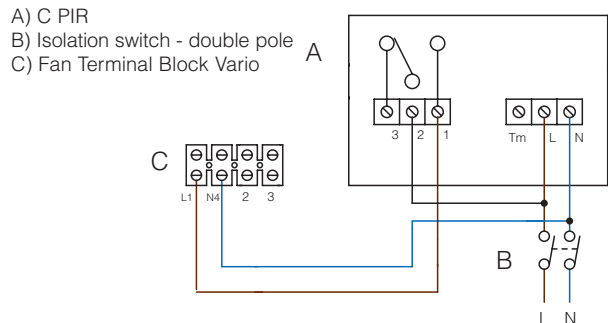
- A) Fan Terminal Block
 B) Isolation switch - double pole



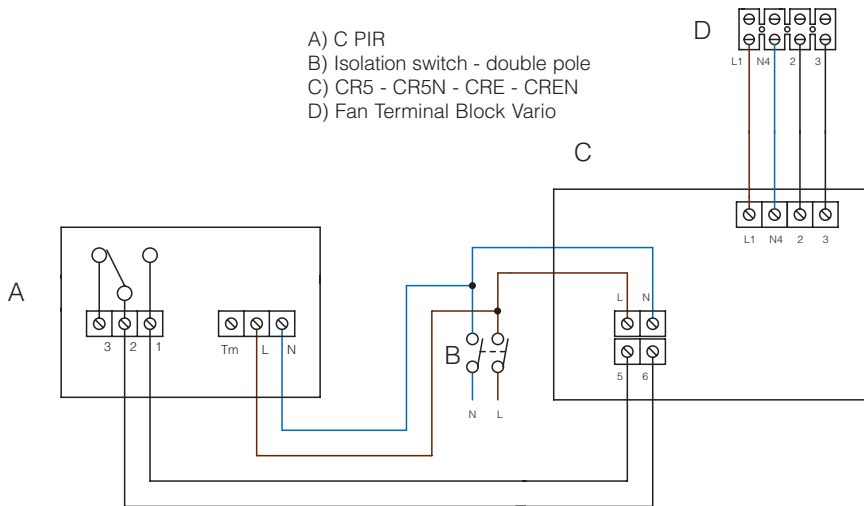
Vario Sensors



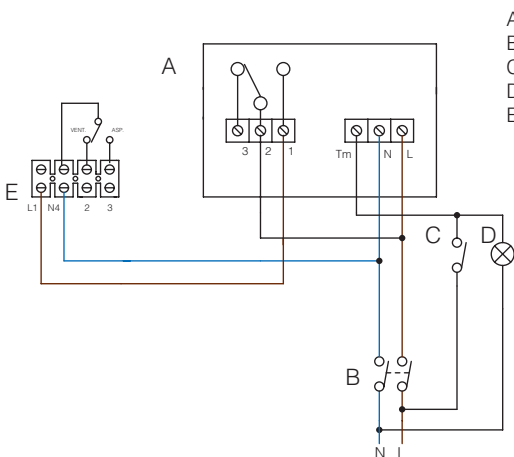
VARIO RANGE REVERSIBLE



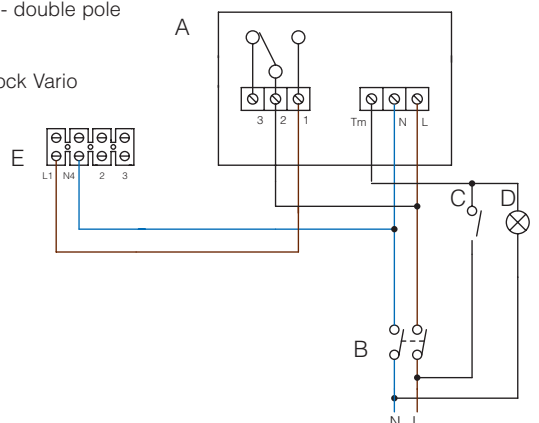
VARIO RANGE NOT REVERSIBLE



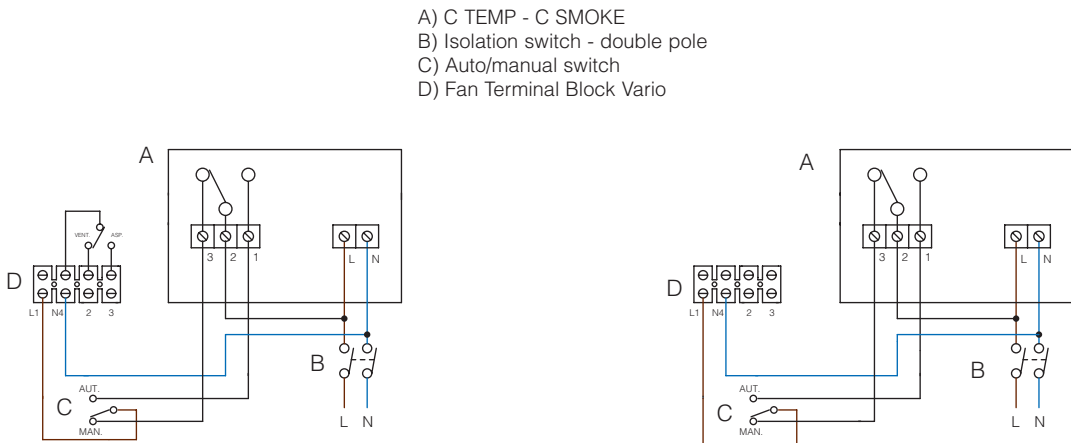
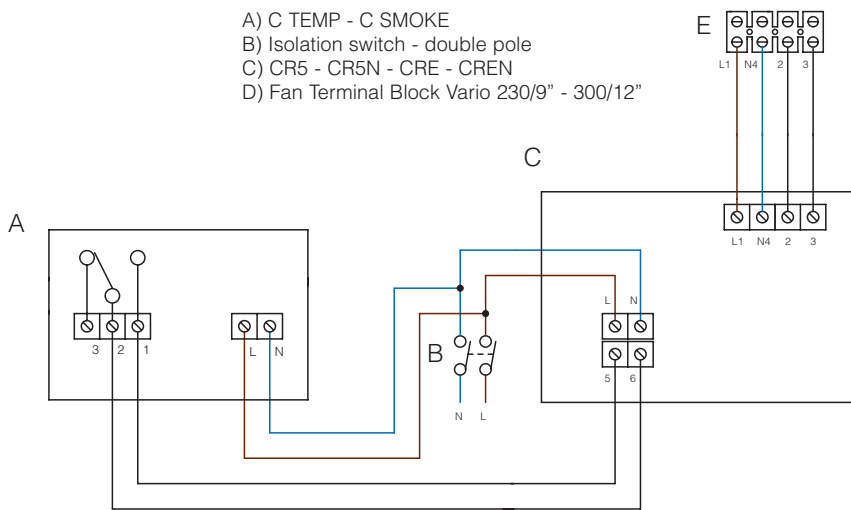
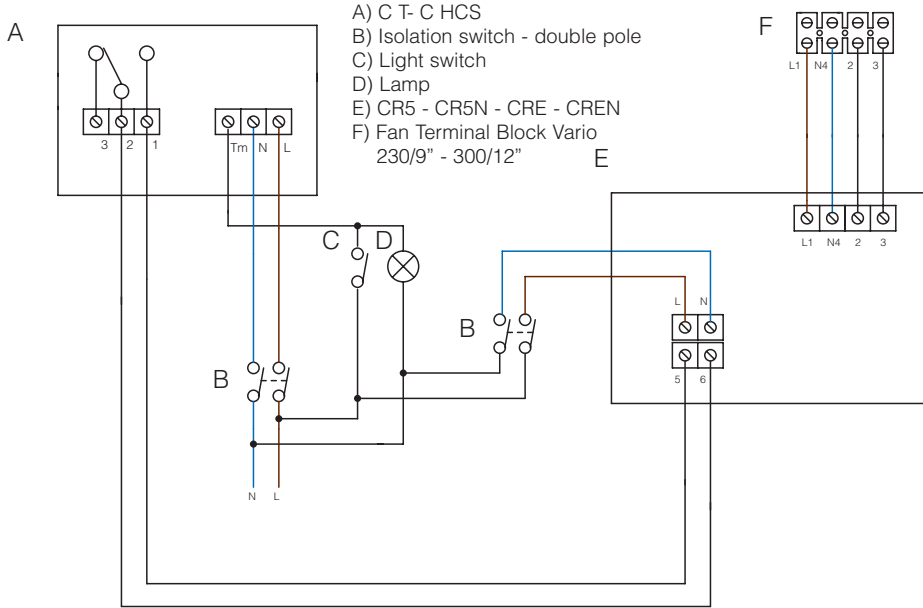
- A) C PIR
 B) Isolation switch - double pole
 C) CR5 - CR5N - CRE - CREN
 D) Fan Terminal Block Vario



- A) C T - C HCS
 B) Isolation switch - double pole
 C) Light switch
 D) Lamp
 E) Fan Terminal Block Vario



Vario Sensors

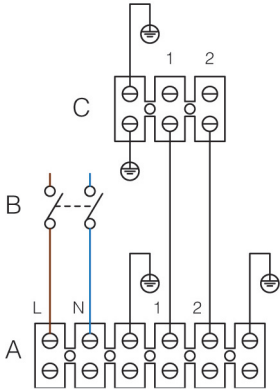


VARIO RANGE REVERSIBLE

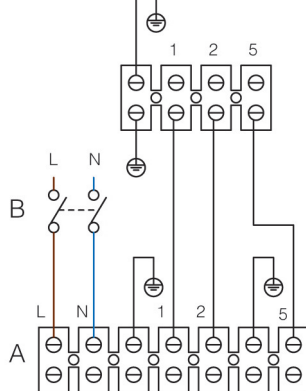
VARIO RANGE NOT REVERSIBLE

Regulators

SCNR/M

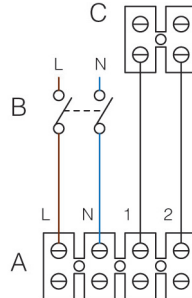


SCRR/M

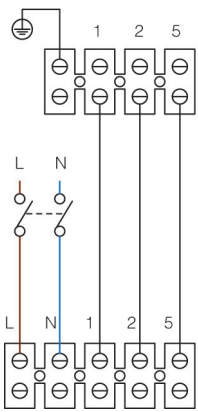


SCNR5

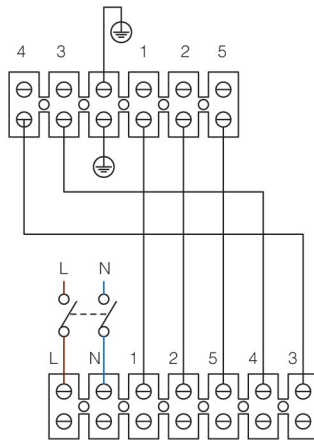
- A) Fan Terminal Block
- B) Isolation switch - double pole
- C) Fan Terminal Block ventilator



SCRR5

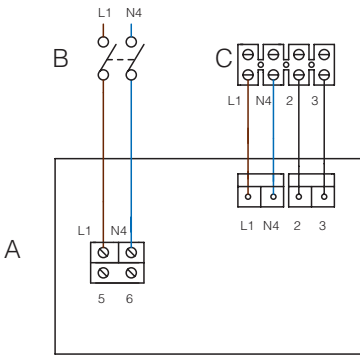


SCRRL5



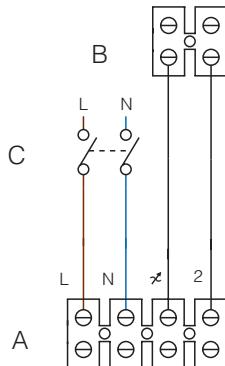
- A) Fan Terminal Block
- B) Isolation switch - double pole
- C) Fan Terminal Block ventilator

CR5 • CR5N • CRN • CREN



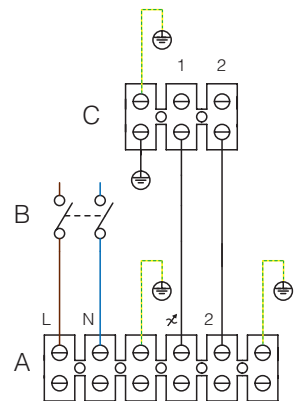
- A) CR5 - CR5N - CRE - CREN
- B) Isolation switch - double pole
- C) Fan Terminal Block Vario

C I.5

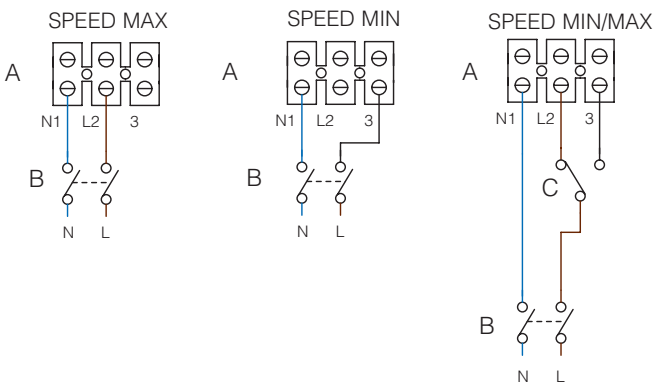


- A) Fan Terminal Block
- B) Isolation switch - double pole
- C) Fan Terminal Block ventilator

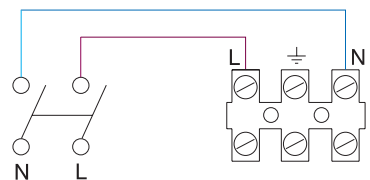
C 2.5



Ariett Habitat • Vort Press Habitat



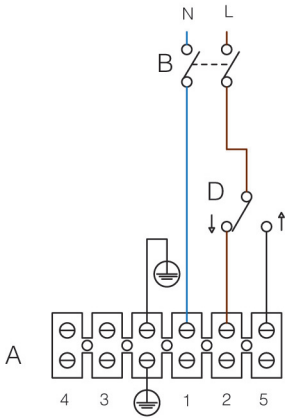
Vortice 54/72



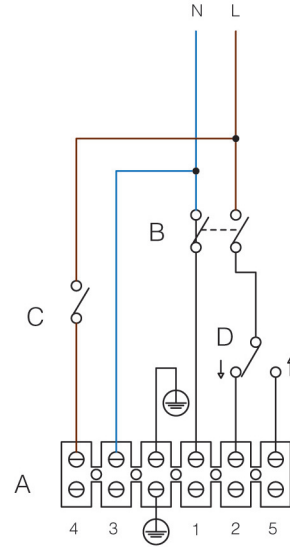
Ceiling fans

- A) Fan Terminal Block
- B) Isolation switch - double pole
- C) Switch lamp
- D) Selector reversibility

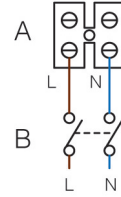
NORDIK EVOLUTION R



NORDIK EVOLUTION R (with light)



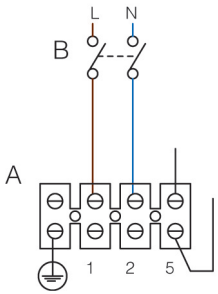
Gordon Wall



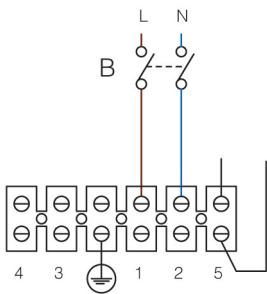
- A) Fan Terminal Block
- B) Isolation switch - double pole

- A) Fan Terminal Block
- B) Isolation switch - double pole
- C) Switch lamp

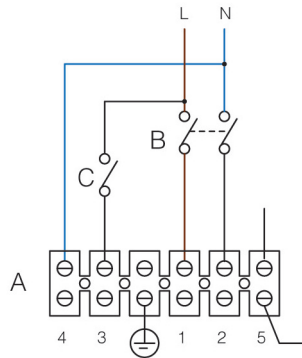
NORDIK DESIGN 1S



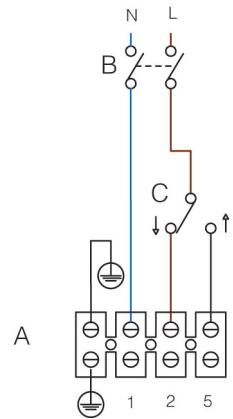
NORDIK DECOR 1S



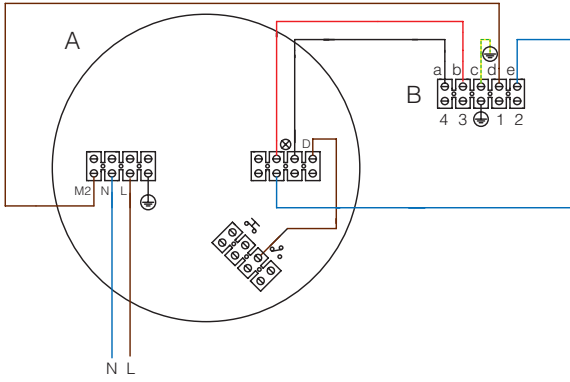
NORDIK DECOR 1S (with light)
NORDIK DESIGN 1S (with light)



NORDIK INTERNATIONAL PLUS R-IPX5

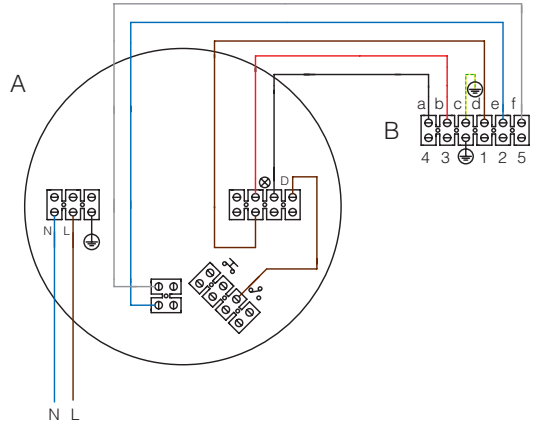


TELENORDIK 5T



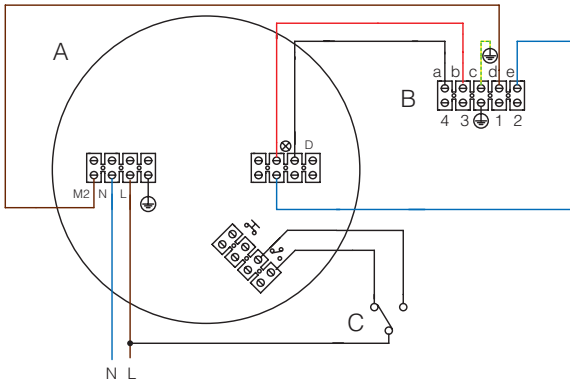
A) Remote control receiver
B) Fan terminal

TELENORDIK 5TR



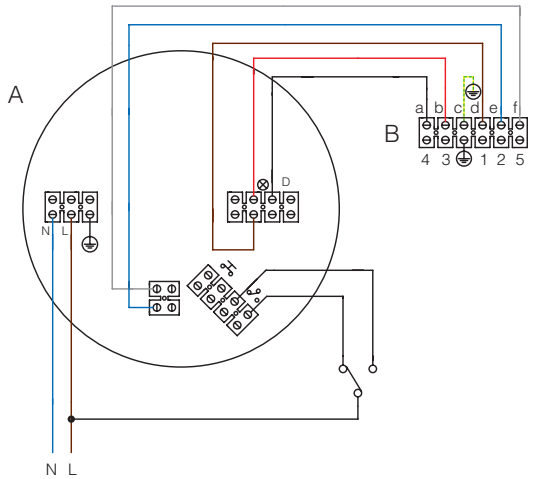
Light can only be switched on and off using the transmitter

TELENORDIK 5T



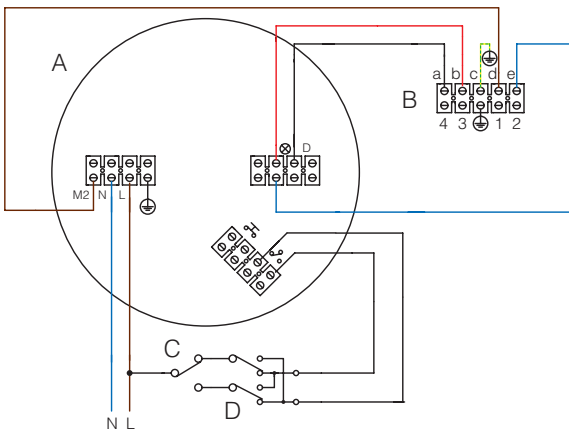
A) Remote control receiver
B) Fan terminal
C) Switch

TELENORDIK 5TR



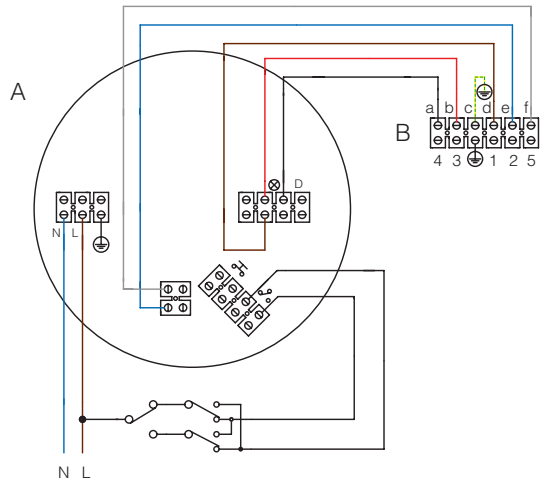
Switch light on and off using remote control transmitter and a variator

TELENORDIK 5T



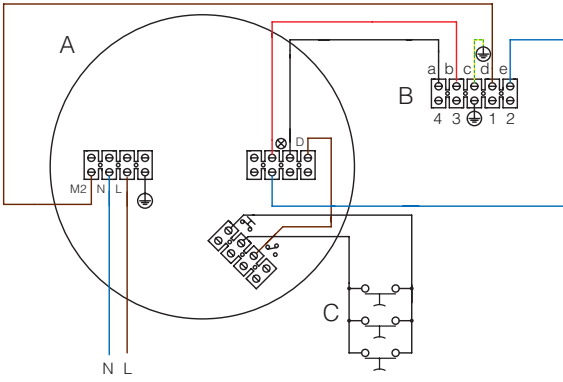
A) Remote control receiver
B) Fan terminal
C) Switch
D) Inverter

TELENORDIK 5TR



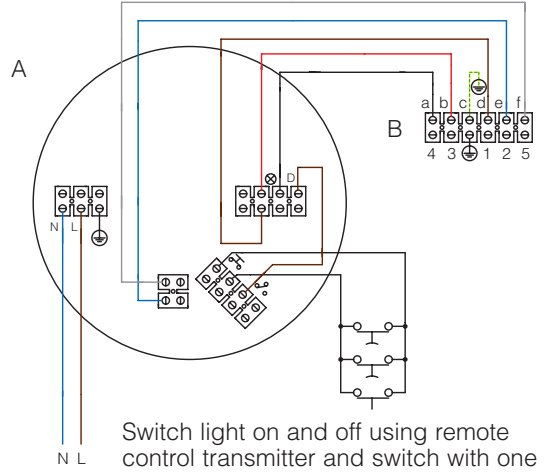
Switch light on and off using remote control transmitter and switch with one or more inverters

TELENORDIK 5T



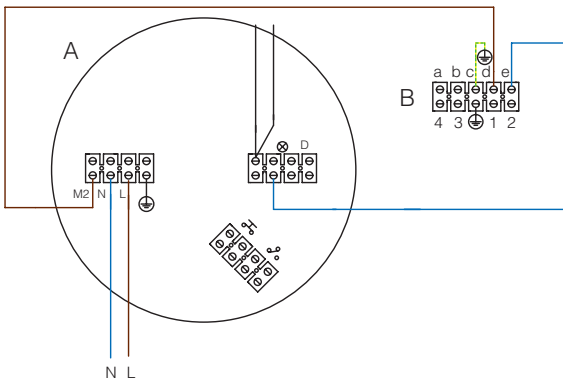
- A) Remote control receiver
- B) Fan terminal
- C) Pushbutton

TELENORDIK 5T R



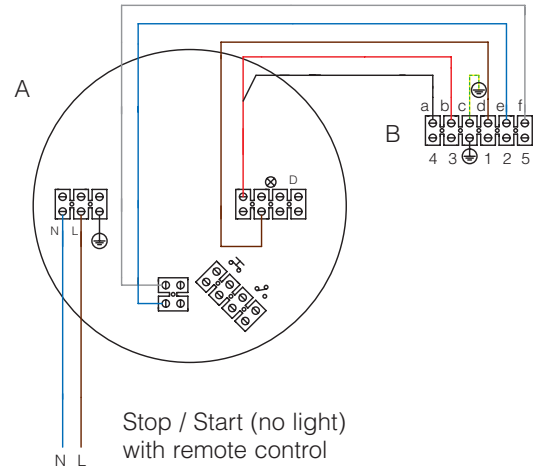
Switch light on and off using remote control transmitter and switch with one or more pushbuttons

TELENORDIK 5T



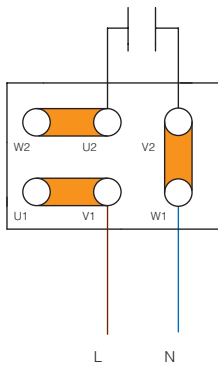
- A) Remote control receiver
- B) Fan terminal

TELENORDIK 5T R

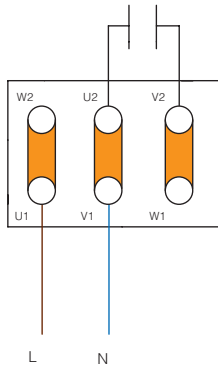


Stop / Start (no light) with remote control

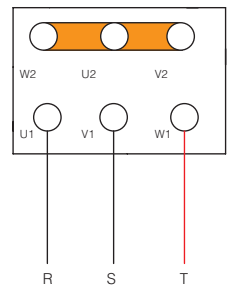
E SINGLE-PHASE 2 POLES (with IRM)



SINGLE-PHASE 4 POLES (with IRM)

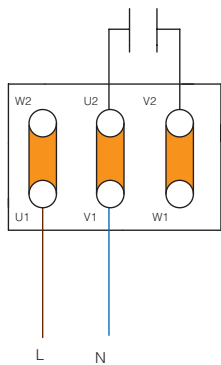


THREE-PHASE (with IRT)

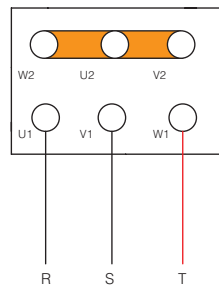


MP • MPC

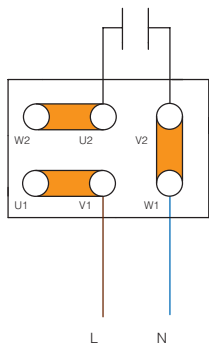
SINGLE-PHASE (with IRM)



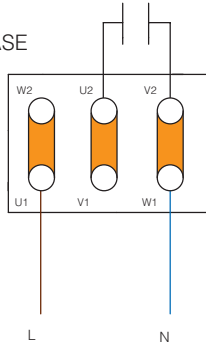
THREE-PHASE (with IRT)



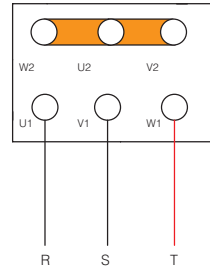
C



SINGLE-PHASE



THREE-PHASE



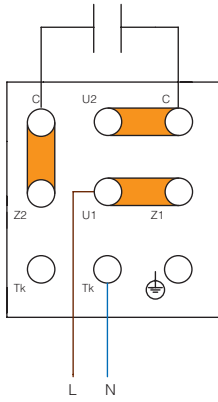
C 20/2 M - C 25/2 M

C 10/2M - C 15/2M - C 30/2M
C 30/4 M - C 35/4 M
C 37/4 M - C 40/4 M

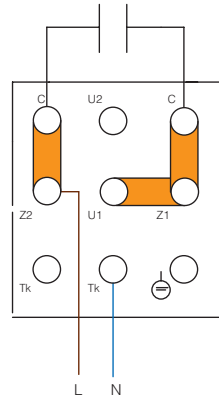
C 10/2 T - C 15/2 T - C 20/2 T - C 25/2 T
C 30/2 T - C 30/4 T - C 31/4 T - C 35/4 T
C 37/4 T - C 40/4 T - C 45/4 T - C 46/4 T

TR

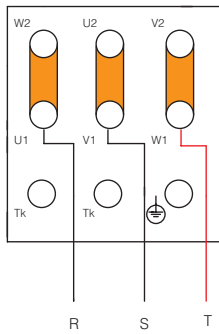
SINGLE-PHASE HIGH SPEED
(with TR-CVM)



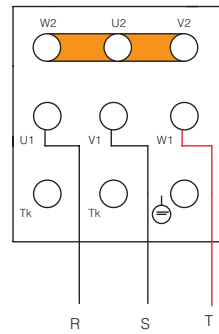
SINGLE-PHASE LOW SPEED
(with TR-CVM)



THREE-PHASE HIGH SPEED
(with TR-CVM)



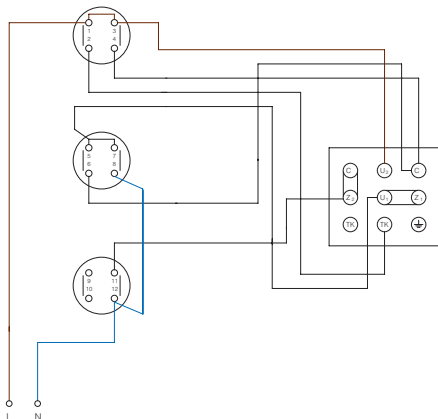
THREE-PHASE LOWSPEED
(with TR-CVT)



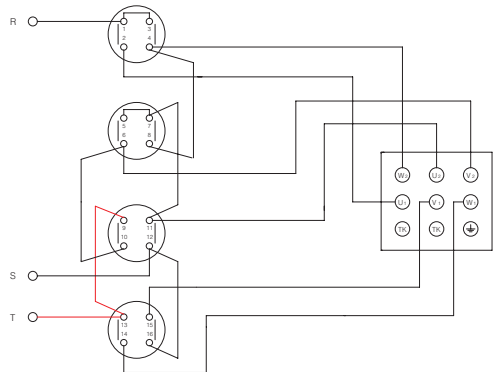
380 V

380 V

TRM with TR-CVM

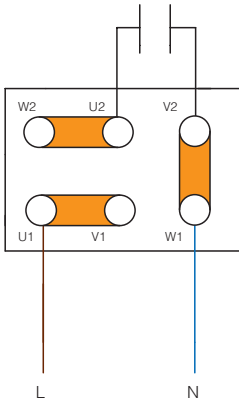


TRT with TR-CVT

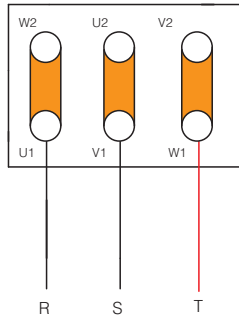


TR-ED

SINGLE-PHASE

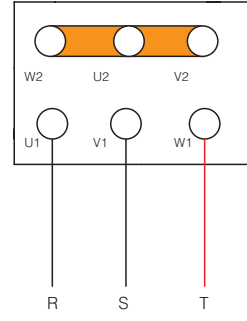


THREE-PHASE
HIGH SPEED



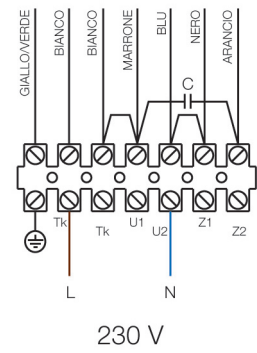
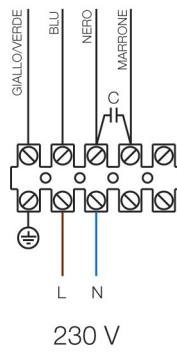
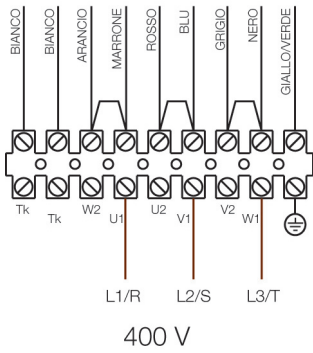
380V

THREE-PHASE
LOW SPEED

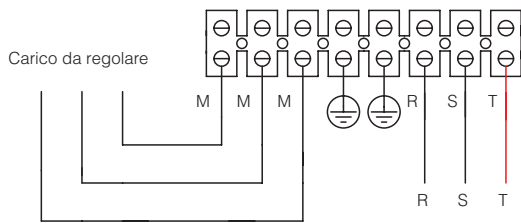


380V

AF-CO

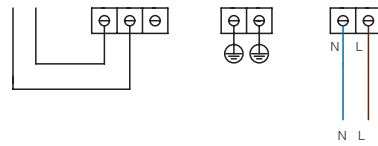


IRT



IREM

Carico da regolare



IRM

Carico da regolare

